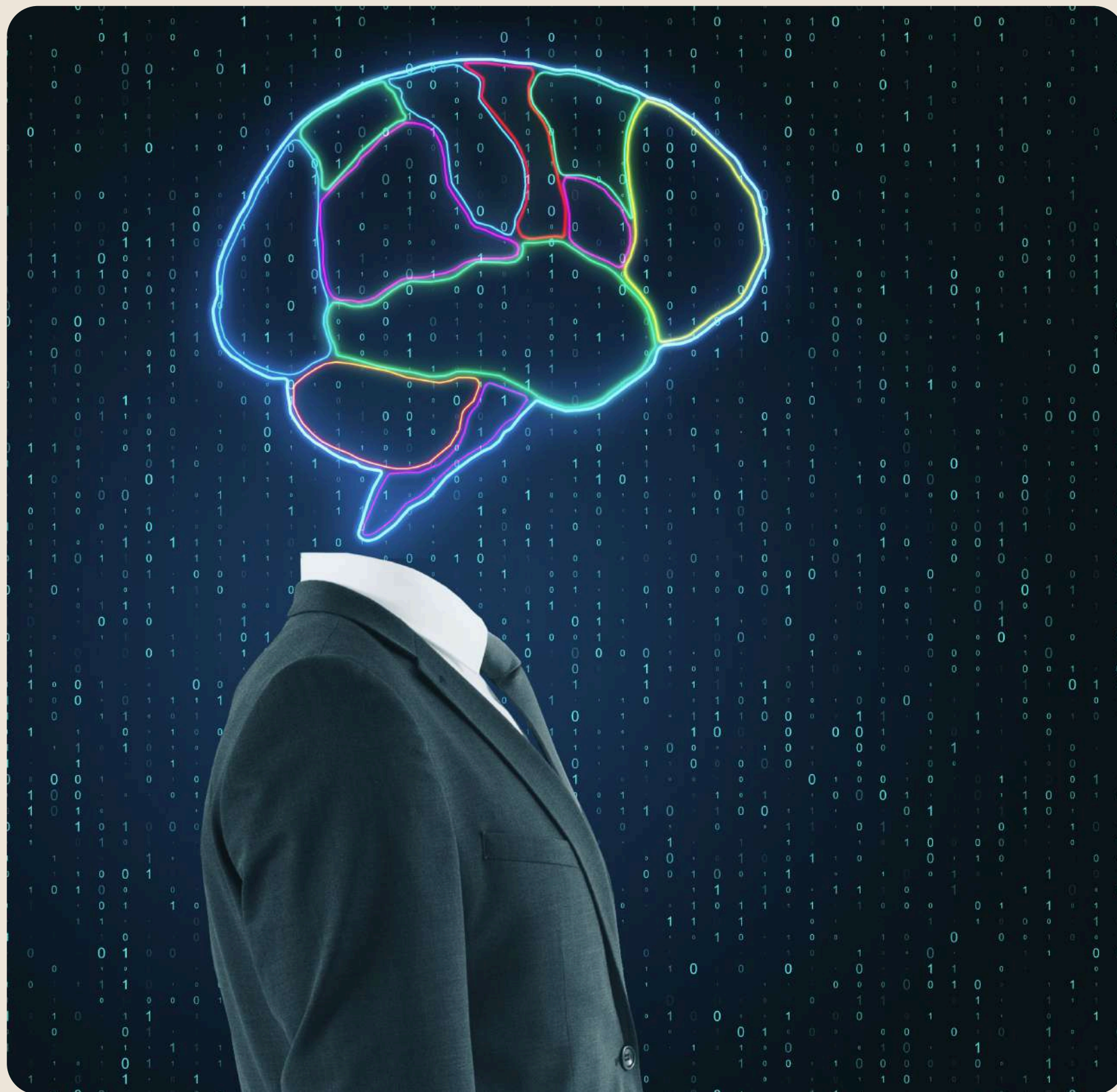


LLM vs Generative AI: Choosing the Right AI Approach for Your Needs





What Is the Difference Between LLM and Generative AI?

Generative AI is a broad category of artificial intelligence that focuses on creating new content such as text, images, audio, and even videos. On the other hand, Large Language Models are a specific type of generative AI designed primarily to understand and generate human-like text. In simple terms, all LLMs fall under generative AI, but not all generative AI systems are LLMs. While generative AI includes tools that create images or music, LLMs specialize in language-based tasks like writing, summarizing, translating, and answering questions.

<https://globussoft.com/llm-vs-generative-ai/>



How Do LLMs Work in Real-World Applications?

LLMs are trained on massive datasets containing text from books, websites, and other sources. They use deep learning techniques to understand patterns, context, and relationships between words. This enables them to generate meaningful and coherent responses.

In real-world applications, LLMs are widely used in chatbots, virtual assistants, content writing, and customer support automation. Tools like ChatGPT demonstrate how LLMs can simulate human conversation, assist users, and provide detailed information across various domains.



What Can Generative AI Do Beyond Text?

Generative AI goes far beyond text generation. It includes systems capable of creating realistic images, composing music, generating videos, and even designing products. For example, platforms like DALL·E can generate images from text prompts, while other tools can create voiceovers or animations.

This broader capability makes generative AI highly valuable in industries such as marketing, entertainment, design, and gaming. It enables businesses to automate creative processes and produce high-quality content at scale.

Conclusion

LLMs and generative AI are closely related but serve different purposes. LLMs focus on language and communication, while generative AI covers a wider spectrum of content creation. Understanding these differences can help you make smarter decisions and implement AI solutions that align with your goals.

As AI continues to evolve, the most effective strategy will not be choosing one over the other, but learning how to use both together to unlock their full potential.

<https://globussoft.com/llm-vs-generative-ai/>

