

Smart Keto Calculator For Accurate Daily Macro Tracking

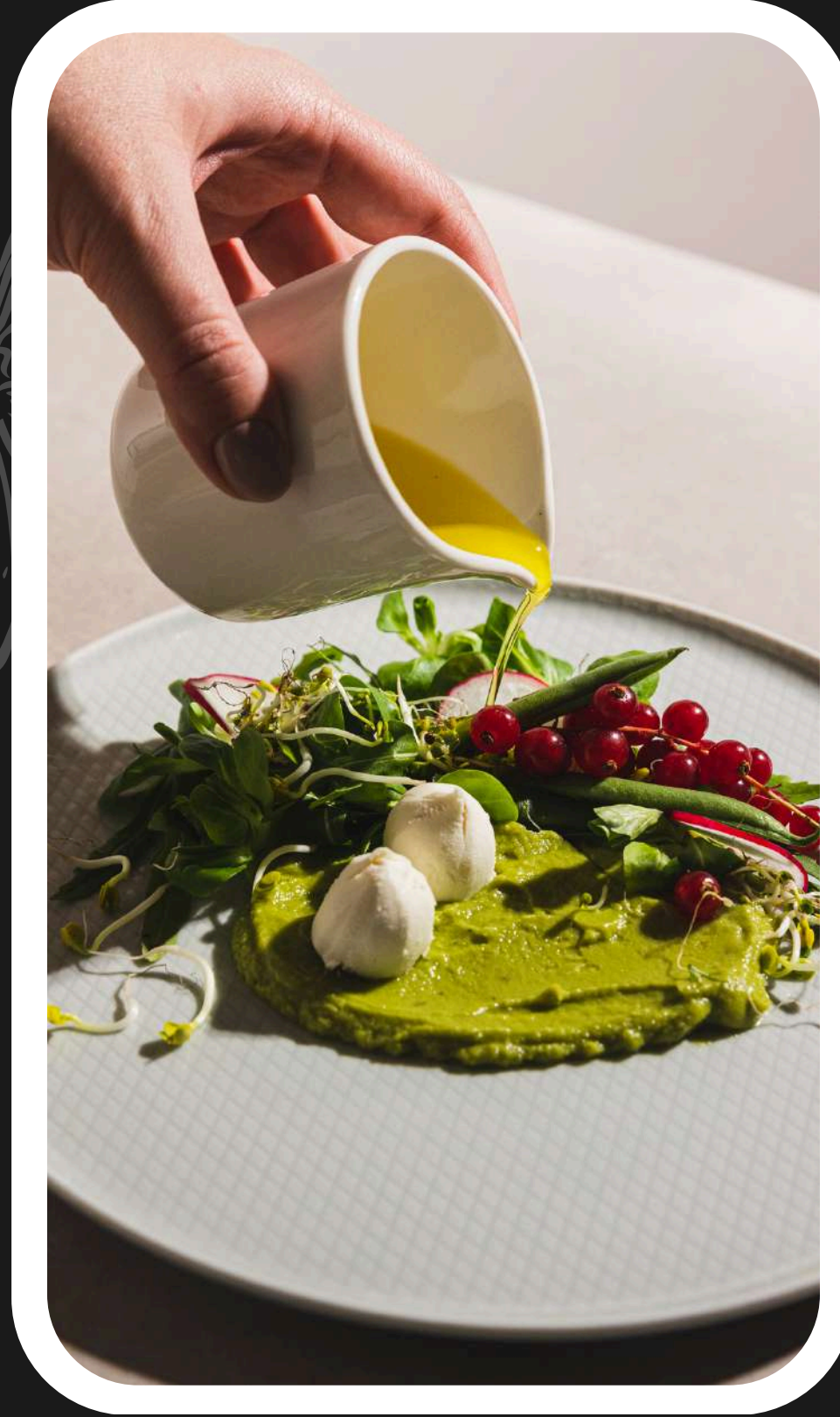




Introduction:

A Smart ***Keto Calculator*** makes your ketogenic journey easier by giving you precise daily macro goals tailored to your body. Instead of guessing how much fat, protein, and carbs you should consume, this tool calculates everything based on your age, weight, activity level, and fitness goals. It ensures you stay in ketosis consistently and track your nutrition with confidence.

What This Smart Keto Calculator Does?



A Smart Keto Calculator provides a personalized breakdown of:

- Daily Calories
- Fat Intake (70-75%)
- Protein Intake (20-25%)
- Carb Limit (5-10%)

This helps you maintain the right macro ratio to stay in ketosis and burn fat effectively. It adapts to your lifestyle, whether you're aiming for weight loss, muscle gain, or maintenance.

Benefits of Using a Smart Keto Calculator

- Precision: Get exact macro numbers customized to your body.
- Simplicity: Removes confusion for both beginners and experts.
- Faster Results: Helps you stay in ketosis for better fat loss.
- Easy Meal Planning: Choose foods that perfectly fit your macro goals.
- Adjustable: Recalculate anytime as your weight or goals change.



Conclusion:



The Smart Keto Calculator is an essential tool for anyone following the ketogenic lifestyle. It gives you accurate, personalized macro targets so you can stay consistent, avoid mistakes, and achieve your health goals faster. Whether you're new to keto or an experienced follower, this calculator makes daily macro tracking effortless and effective.

<https://caloritrackerbuddy.com/blog/keto-calculator/>