

# A Complete Guide To Using EmpMonitor For Workforce Management

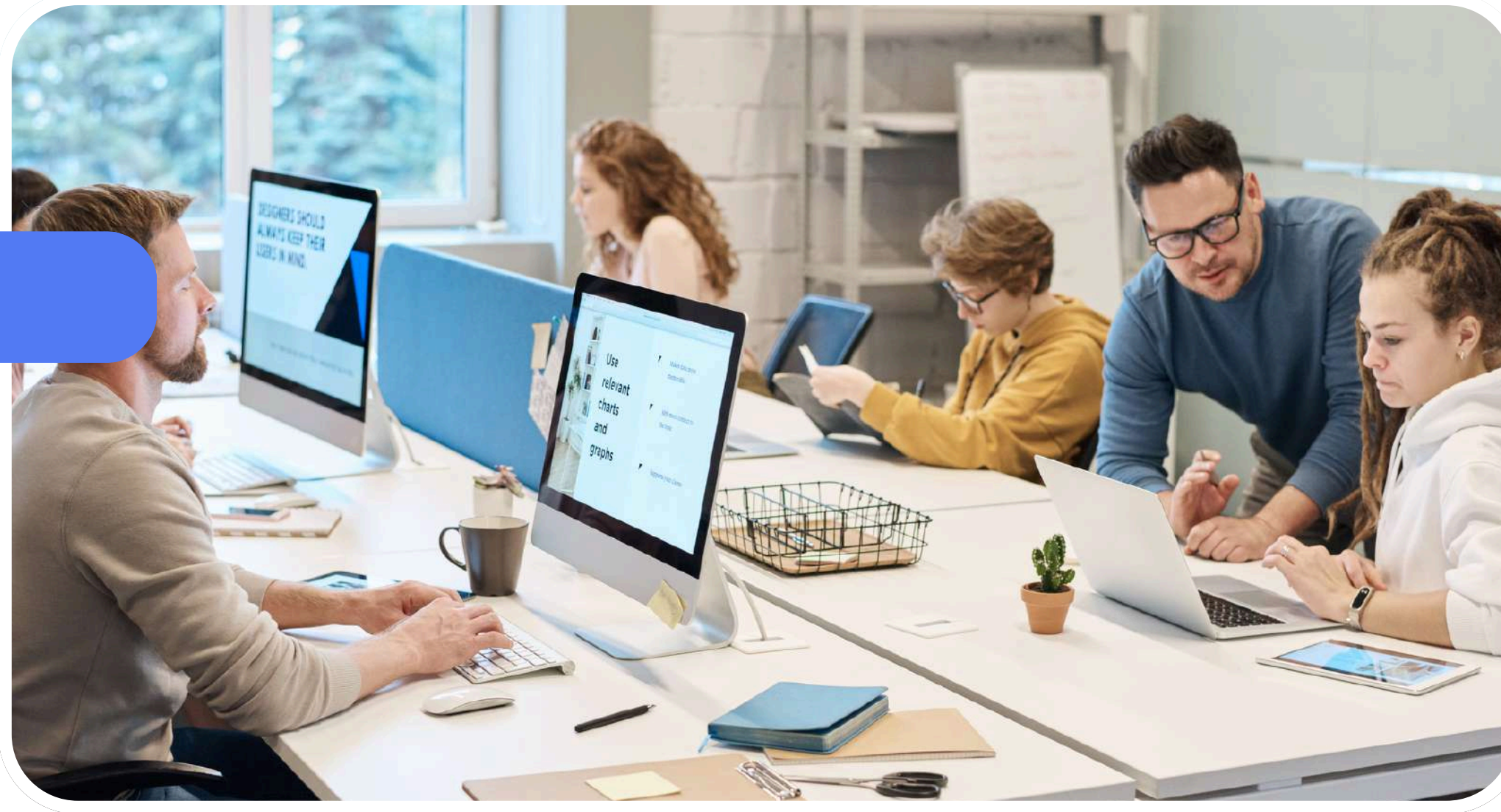


# What is EmpMonitor?



***EmpMonitor*** is a workforce monitoring solution designed to track employee activity and performance. It provides real-time insights into how teams spend their time, which helps managers identify productivity trends and areas for improvement. By offering detailed reporting and analytics, EmpMonitor ensures transparency and accountability while maintaining privacy and professionalism. Businesses can leverage this information to optimize workflow, improve task allocation, and boost overall efficiency.

# Key Features Of EmpMonitor



EmpMonitor comes packed with features that make workforce management easier:

- Activity Tracking: Monitors employee engagement with applications, websites, and tasks.
- Time Management: Records work hours accurately to prevent overwork or underutilization.
- Productivity Reports: Offers detailed analytics on task completion, app usage, and project progress.
- Alerts and Notifications: Provides real-time alerts to identify potential bottlenecks or unproductive periods.
- Secure Data Handling: Ensures sensitive information is protected while providing managers the insights they need.

# Best Practices for Using EmpMonitor

To get the most out of EmpMonitor:

- Use reports to have constructive conversations, not just surveillance.
- Avoid micromanaging; focus on trends and patterns rather than individual mistakes.
- Set realistic productivity goals based on data insights.
- Encourage transparency with employees about monitoring to maintain trust.

Following these practices ensures that EmpMonitor enhances workforce management without causing friction or discomfort among employees.



# Conclusion

EmpMonitor is more than just a monitoring tool; it's a comprehensive solution for workforce management. By providing real-time insights, accurate tracking, and actionable reports, it helps businesses optimize performance, improve productivity, and maintain accountability. Implementing EmpMonitor with transparency and strategic intent ensures long-term success in workforce management, empowering both managers and employees to achieve their best.



By tracking workflow, EmpMonitor helps managers identify unproductive habits, redistribute workloads, and optimize scheduling. Regular reports highlight top performers and areas that need support. Teams can receive feedback based on objective data, fostering accountability and motivation. Over time, consistent monitoring allows managers to implement strategic changes that enhance efficiency, improve task prioritization, and reduce wasted effort.



<https://empmonitor.com/employee-monitoring-software/>